

Company Introduction

Huazhong Consulting Group



Shanghai Huazhong Consulting Service Co., Ltd.



Shanghai Huazhong Investment Consulting Co., Ltd.



Shanghai Huazhong Information System Consulting Co., Ltd.



Shanghai Huazhong International Trading Co., Ltd.



Huazhong Consulting Co., Ltd.

www.shcs.com.cn

www.shcs.jp

Contents

1. **Company Profile**
 - **Group Profile**
 - **Qualification Certificate**
 - **Consultant of Municipalities and Development Zones**
2. **Organizational Structure**
3. **Membership System**
4. **Member Service**
 - **“General Service”**
 - **Demonstration of Information and Q & A Search**
 - **“Specific Service” (1)**
 - **“Specific Service” (2)**
 - **“Specific Service” (3)**
5. **Huazhong Hope School Construction Project**
6. **Contact Information**

1. Company Profile *Group Profile*

Name	Shanghai Huazhong Consulting Service Co., Ltd. (SHCS)	Shanghai Huazhong Investment Consulting Co., Ltd.(SHTS)	Shanghai Huazhong Information System Consulting Co., Ltd. (SHIS)	Shanghai Huazhong International Trading Co., Ltd. (SHTC)	Huazhong Consulting Co., Ltd. (JHCS)
Address	23F Xinhualian East Building, 755 Huaihai Road Middle, Shanghai	23F Xinhualian East Building, 755 Huaihai Road Middle, Shanghai	Room C, 23F Xinhualian East Building, 755 Huaihai Road Middle, Shanghai	Room 315, 3rd F, 3rd Building, 500 Bingke Road, China (Shanghai) Pilot Free Trade Zone	2-2-11 Dosho-Machi, Chuo-Ku, Osaka
Date of Establishment	April 7, 1994	April 27, 2006	March 25, 2009	Feb 25, 2014	August 25, 2005
Registered Capital	22 Million Yens (as of 2020)	114 Million Yens (as of 2020)	1.25 Million RMB (as of 2020)	5 Million RMB (as of 2020)	15 Million Yens (as of 2020)
Investors & Investment Composition	Huazhong Consulting Co., Ltd. 60% Shanghai Textile Foreign Economic & Technical Cooperation Co., Ltd. 40%		Shanghai Huazhong Consulting Service Co., Ltd. 80% Senior Management Staff of SHIS 20%	Shanghai Huazhong Consulting Service Co., Ltd. 100%	Mr. Tsuneo Kobayashi 66.6% Mitsui & Co., Ltd. 13.3% Mr. Toru Nose 10% SMBC 5% JRI 5%
Company Representative	Chairman: Tsuneo Kobayashi Vice Chairman : Sheng Ting General Manager: Toru Nose	Chairman: Tsuneo Kobayashi Vice Chairman : Sheng Ting General Manager: Toru Nose	Chairman: Tsuneo Kobayashi General Manager: Shoichi Kobayashi	Chairman: Tsuneo Kobayashi General Manager: Shoichi Kobayashi	Chairman & President: Tsuneo Kobayashi Chairman: Tatsuya Kondou
Number of Employees	78 Employees (as of 2021)				
Sales Revenue	940 Million Yens (Year 2020)				
Number of Members	732 Member Enterprises (as of Aug 2021)				

Company
Profile

Organizational
Structure

Membership
System

Member
Service

Hope
School

Contact
Information

華鐘コンサルタントグループ

1. Company Profile *Qualification Certificate*

- ***“Shanghai Key Professional Service Trading Institution (Consulting service)”***

- issued by Shanghai Municipal Commission of Commerce

Shanghai Key Professional Service Trading Institution



- ***“Shanghai Foreign Consulting Institution A-Level Qualification”***

- issued by Foreign Business Consultation Working Committee under Shanghai Association of Enterprises with Foreign Investment



Shanghai Foreign Consulting Institution A-Level Qualification

- ***“First-class Foreign Investigation Qualification”***

- issued by the Statistics Bureau of China
- entitled to investigate in industries and areas nation-wide
- the first to achieve such qualification in Japanese consulting companies in Shanghai



Shanghai Foreign Investigation Qualification

- ***“Shanghai Foreign Investigation Qualification”***

- issued by the Statistics Bureau of Shanghai

- ***“Shanghai Reputable Consulting Enterprise”***

- jointly issued by the Shanghai Science Technology Board & Shanghai Consulting Association



Shanghai Reputable Consulting Enterprise

- ***“Certificate of ISO9001, ISO14001”***

- issued by BVQI (an ISO certification institution)



ISO9001 Certificate ISO14001 Certificate

- ***“Award of Project Hope in Yunnan Province”***

- jointly issued by the Comsomol Committee of Yunnan Province and the Youth Development Foundation of Yunnan Province

Company
Profile

Organizational
Structure

Membership
System

Member
Service

Hope
School

Contact
Information

華鐘コンサルタントグループ

1. Company Profile *Consultant of Municipalities & Development Zones*

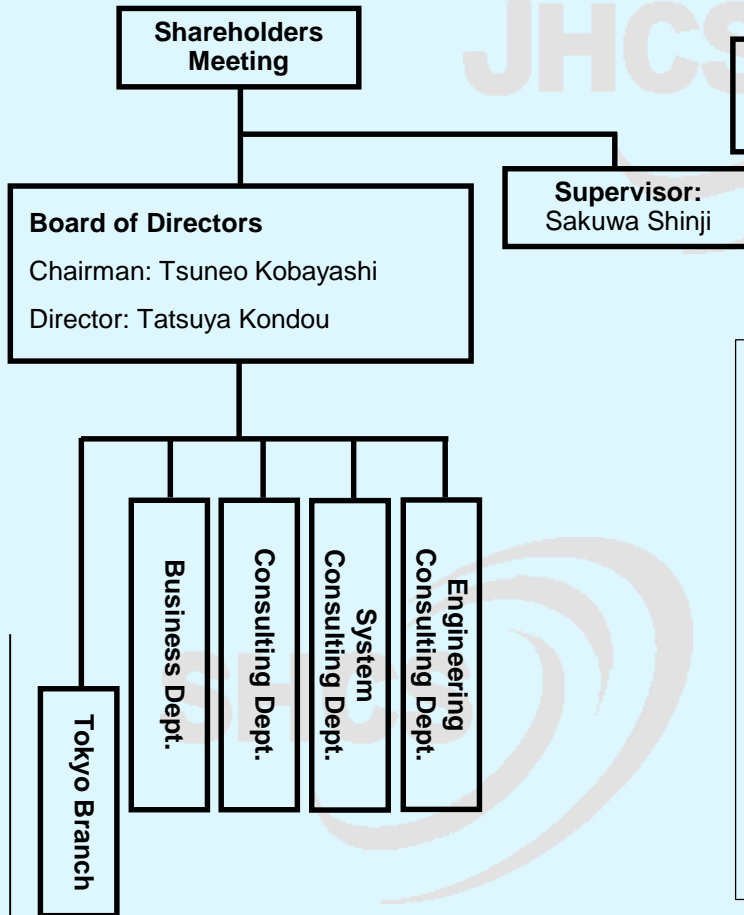
➤ **General Manager of SHTS, Mr. Tsuneo Kobayashi has been appointed as the Consultant of following municipalities and development zones, based upon his 35 years of experience in business investment in China.**



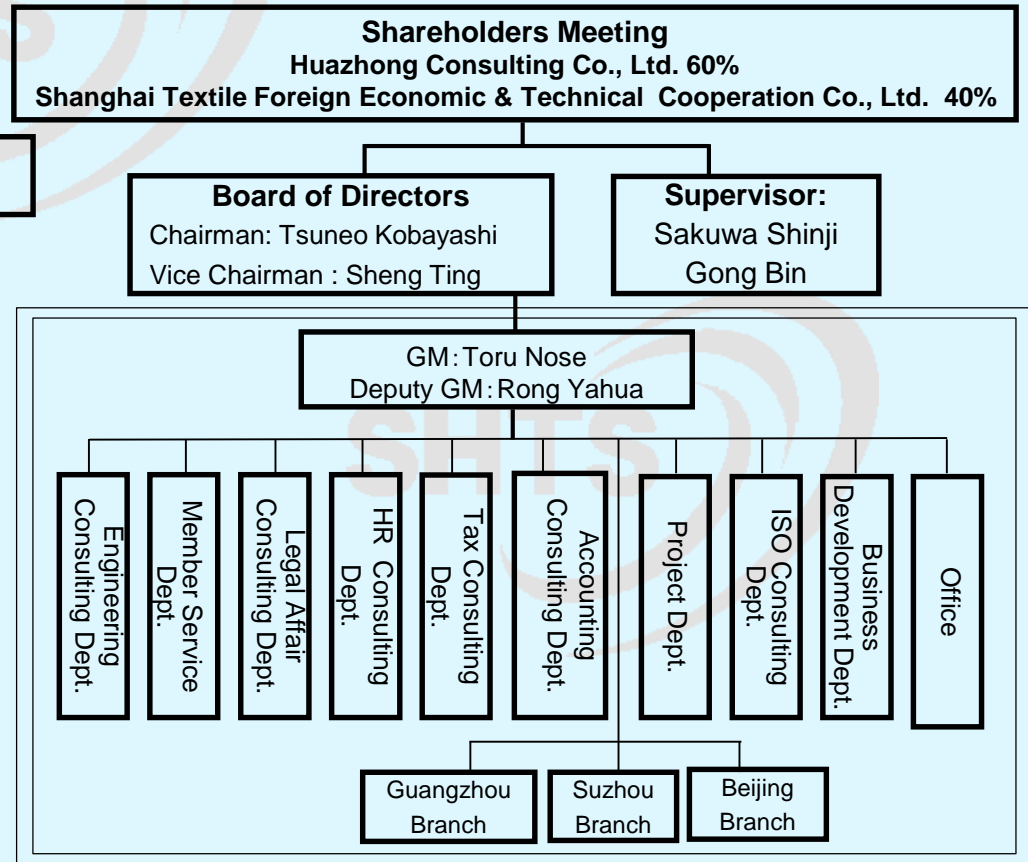
- Director, Executive Director, Vice President of Shanghai Association of Enterprises with Foreign Investment (SAEFI)
- Vice President of the Foreign Business Consultation Working Committee of SAEFI
- Senior Consultant of Shanghai Foreign Investment Development Board
- Senior Consultant of Shanghai Overseas Investment Development Board
- Senior Consultant of Changzhou Municipality, Changzhou National Hi-Tec District Administration Commission
- Investment Consultant of Changshu Municipality
- Consultant of Huzhou Municipality
- Consultant of Pinghu Municipality
- Senior Commercial Consultant of Cixi Municipality
- Investment Promotion Consultant of Zhangjiagang Municipality
- Economic Development Consultant of Nanjing National Chemical Industrial Park Administration Commission
- Senior Consultant of Nantong National Economic Technology Development Zone Administration
- Investment Consultant of Lianyungang National Economic Technology Development Zone Administration Commission
- Senior Consultant of Jiading Economic Development Zone Administration
- Investment Consultant of Huizhou Dayawan Economic Technology Development Zone
- Senior Consultant of Ningbo Free Trade Zone
- Senior Commercial Consultant of Shandong Weifang Binhai Economic Development Zone
- Conferred *Shanghai Magnolia Silver Award* as of September 2003
- Conferred *Shanghai Magnolia Golden Award* as of September 2007
- Conferred the honor as *Friend of Wuzhong District* by Suzhou Municipality as of October 2004
- Conferred *People's Republic of Permanent Residence Card* as of November 2009
- Conferred *Pinghu Investment Promotion Meritorious Award (Silver Medal)* as of June 2011
- Consultant of The SUZHOU Chamber of Commerce in Beijing

2. Organizational Structure (JHCS, SHTS)

Huazhong Consulting Co., Ltd. Japan (Osaka, Tokyo)



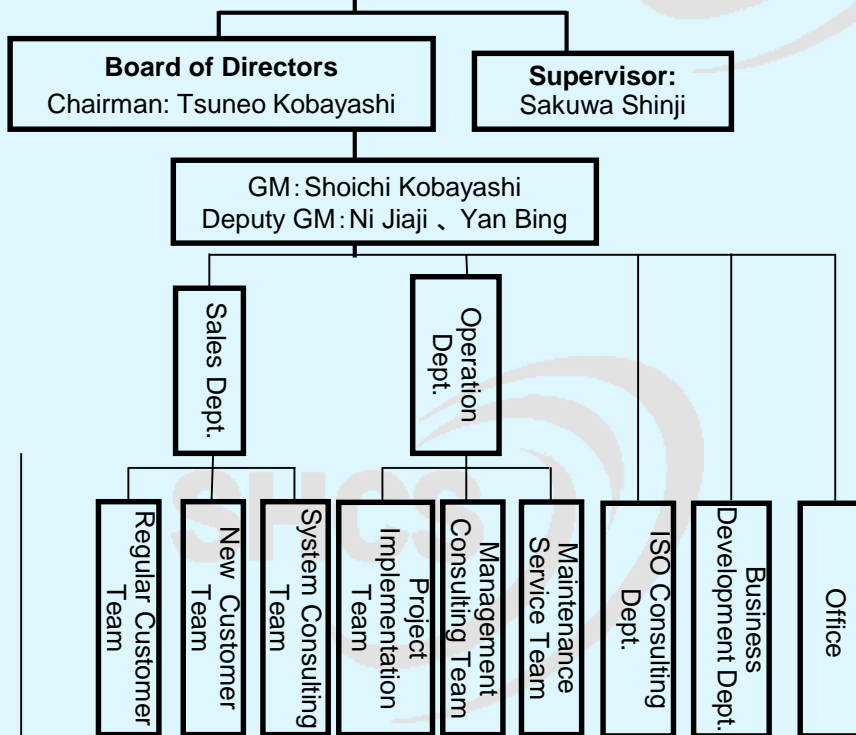
Shanghai Huazhong Investment Consulting Co., Ltd. China (Shanghai, Beijing, Guangzhou, Suzhou)



2. Organizational Structure (SHIS, SHCS)

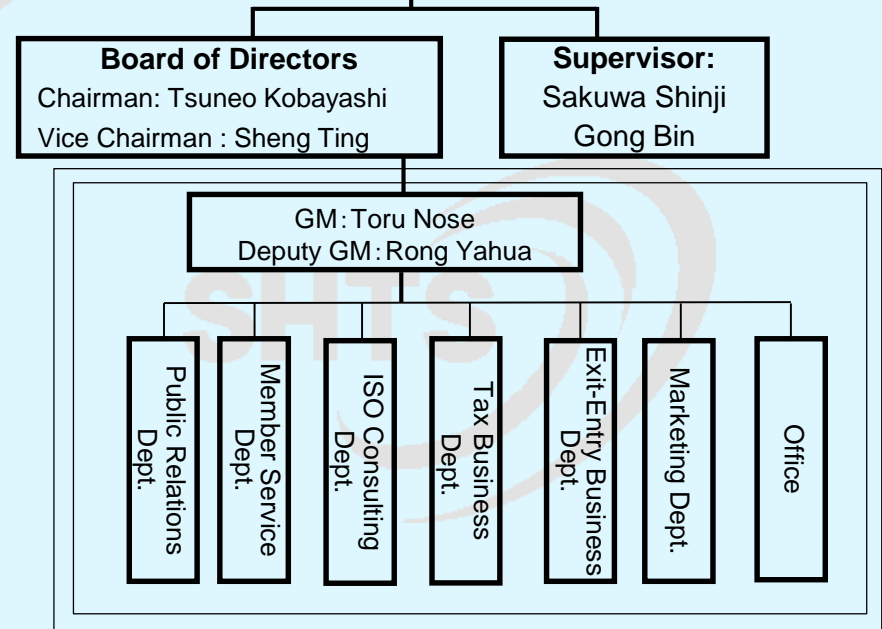
Shanghai Huazhong Information System Consulting Co., Ltd.

•Shareholders Meeting
 •Shanghai Huazhong Consulting Service Co., Ltd.: 80%
 •Senior Management Staff of SHIS: 20%



Shanghai Huazhong Consulting Service Co., Ltd.

Shareholders Meeting
 Huazhong Consulting Co., Ltd. 60%
 Shanghai Textile Foreign Economic & Technical Cooperation Co., Ltd. 40%



3. Membership System

- All services will be given to registered companies only.
- When registered, members may receive “General Service” (free) and “Specific Service” (charged and contracted individually). Please refer to Page 9,10,11 and Page 12 for more details on “General Service” and “Specific Service.”
- When registered, members will submit “Member Service Memo” and “Application Form for Membership” after agreeing to the Membership Regulations.
- Yearly Membership Fee: Formal Member= 20,000.-RMB,
Junior Member= 6,000.-RMB,
Info Net Member= 15,000.-RMB

	Yearly Membership Fee (no entrance fee needed)	General Service	Specific Service	Note
Formal Member	20,000.-RMB	○	○	(*1)
Junior Member	6,000.-RMB	○	○	(*2)
Info Net Member	15,000.-RMB	△ (*3)	×	

(*1) With the consent of our company, local corporation in China that their capital is owned by the Formal Member may also receive “Specific Service.”

(*2) Associated Corporation which registered overseas and have direct investment relationship (over 25%) with Formal Member. Or the subsidiary company in China with over 25% of direct investment of the Investment Company established in China as a Formal Member.

(*3) Info Net Members are not given interview consultation services and telephone consultation services referred on Page9.

4. Member Service *General Service*

➤ Service as follows will be given to members at no charge.

1. Members may visit the Company for an interview consultation at any time if they feel it is necessary, and in principle, the Company's reception time is limited to one hour. Consultation may be made directly by phone in case of emergency.
2. Members may submit questions by filling out the "Q&A Form" prescribed by the Company and send to the email address specified by the Company, requesting the Company for answer in writing. In principle, the Company will give written answer in PDF form to the customer (e-mail address) within one week based on the e-mail address filled in the "Q&A Form" by the customer. The accumulative frequency of question and answer is limited to 24 times a year and the Company will charge for additional fee in case of any excess.
3. In principle, "Daily Huazhong News" (Japanese version) will be distributed daily while "Daily Huazhong News" (Chinese version) will be distributed three times each week, will be sent out by e-mail registered address (10 email addresses at maximum for Japanese version and 5 at maximum for Chinese version) listed in the Original Member Register.
4. Japanese and Chinese versions of Monthly Huazhong News will be released one time each month in principle by sending to the email address registered for Daily Huazhong News.
5. The Company will provide the ID and password for its members-only webpage based on the first two e-mail address recorded in the Original Member Register. After entering the ID and password, the member may access previous editions of the Daily Huazhong News and Monthly Huazhong News on the member-only webpage and may download various lecture materials from the Company.
6. After entering the ID and password, members are able to access and download the "China Business Q&A" and "Legal Database" accumulated by the "Company" over the years by entering keywords on the member-only webpage.

4. Member Service *Specific Service*

➤ When signing a contract with a member for "Specific Services", the Member Service Department will render services including making quotation and signing the contract as the window.

▶ Business registration	New registration; capital increase or decrease, expansion of business scope, relocation and other changes during existence; business liquidation
▶ Business restructuring	Equity acquisition, asset acquisition, business merger, business division; legal, labor, finance, tax due diligence
▶ Financial accounting	Accounting consulting, internal control, internal audit, bookkeeping, accounting rules conversion, consolidated statements
▶ Taxation	Tax consultation, transfer pricing, PE assessment, taxation of non-trade payments, tax risk investigation
▶ Labor	Labor consultation, employment rule formulation, support services for layoffs in business liquidation, relocation, and reorganization
▶ Market research	Industry survey, business operation investigation, competitor investigation, business matching-related investigation
▶ Employment of foreigners	Obtaining of work permit, personal tax returns, human resource agency
▶ Obtaining of permission	Permission related to hazardous chemicals, food, public health, medical devices and other industries
▶ Engineering construction	Construction management such as support in designing, constructing, and supervising, bidding support, and relocation compensation negotiation
▶ EHS support	Risk assessment and solutions relating with environmental, health and safety
▶ ISO	Consultation for ISO9001, ISO14001, ISO45001, IATF16949, etc.
▶ IT-ERP	Information system construction, software introduction, and integrated management of affiliated companies
▶ Others	Investment from Chinese company in Japan, translation, recruitment, opening

4. Member Service *Specific Service* (example)

➤When signing a contract with a member for "Specific Services", the Member Service Department will render services including making quotation and signing the contract as the window.

▶ Support services for registration, change and revocation throughout the business life cycle

1. Business establishment: Site selection for business premise; name registration; preparation of documents such as articles of association, F/S, etc.; obtaining business license and all qualification to start business.
2. Support of all changes in business existence: Support services for capital increase, capital decrease, relocation, change in business nature, change in the legal representative, change in Company name, expansion of business scope, etc.
3. Support services for business revocation and liquidation: Government endorsement, personnel sorting, asset disposal, settlement of credit and debt, tax revocation, customs and foreign exchange revocation, bank account revocation, remittance of remaining funds, final revocation of business license.

▶ Business restructuring support such as equity acquisition, asset acquisition, merger and division

Investigation and analysis based on the restructuring purpose, proposing an overall plan and advice on business restructuring

Due diligence (including legal affair, HR, finance, tax, etc.)

Overall asset valuation support for restructuring targets

Support relating with personnel sorting, lay-out

Support in negotiation with, application with and obtaining all permits from the competent government departments

Support in tax planning and accounting consultation for the entire restructuring

4. Member Service *Specific Service* (example)

➤ When signing a contract with a member for "Specific Services", the Member Service Department will render services including making quotation and signing the contract as the window.

▶ Support services for Accounting consultation and Tax consultation

1. Accounting consultation: Monthly accounting audit and consulting services in accordance with the requirements of business compliance; bookkeeping as an agent; design and establishment of internal control systems in accordance with internal control requirements and regular effectiveness tests; regular internal financial audit engagement and issue of consulting reports as required by the investor; consolidation of statements and conversion of different accounting rules as required by the investor.
2. Tax consultation: Regular diagnosis on tax-related matters of the business and issue of the tax risk and improvement report; risk warning or preparation of transfer pricing report for the trade and non-trade payments between affiliates in accordance with relevant regulations; judgment on whether engineering and labor service provided to a non-resident entity constitutes PE; overall tax planning for business reorganization, relocation and liquidation.
3. Tax declaration agent: Individual income tax returns and tax payment as an agent of an expatriate; source tax returns for various non-trade payments as an agent of the non-resident enterprise, including withholding and payment of source tax for profit distribution, gains from equity transfer, payments for technology transfer and technical service fees, PE business.

▶ Support of business personnel sorting

Preparation of analysis and estimation report, and consultation plan that is compliant and optimal in response to various demands for business liquidation, merger, division, equity transfer, relocation, pure layoff

Preparation of detailed compensation calculation scheme and the plan for potential problems and finalization of the official personnel settlement plan in light of the specific business and enterprise realities

Communication with local government departments for consensus

On-site handling of questions raised by various employees

Solution to problems of special personnel, special issues, and completion of staffing sorting

5. Huazhong Hope School Construction Project

Six Huazhong Hope School

- ◇ Wenneiteqi 1st Huazhong Hope School in Chifeng of Inner Mongolia Municipality
- ◇ Qingming 2nd Huazhong Hope School in Puer County of Yunnan Province
- ◇ Tiandeng 3rd Huazhong Hope School in Yunlong County of Yunnan Province
- ◇ Tuanjie 4th Huazhong Hope School in Luquan County of Yunnan Province
- ◇ Zhengxing 5th Huazhong Hope School in Jinggu County of Yunnan Province
- ◇ Longcanggouxiang 6th Huazhong Hope School in Yingjing County of Sichuan Province



Totally, there're 1,500 students and 120 teachers worked in five Huazhong Hope School.

Establishing Huazhong Project Hope Awarding Funds

In order to encourage good teachers and students and help those students whose family circumstances are poor, we especially establish *Huazhong Hope Awarding Funds* upon the approval of the Board of Directors.



We award prize and scholarships to teachers and students of six Huazhong Hope School who are excellent and poor.

Sustaining Support

After the establishment of Huazhong Hope Schools, we actively keep in touch and have made lots of donation including clothes, stationery, dictionary and books. Besides, we would provide sustaining support and publicize the project to our member enterprises, so that they could give us more helps.



We bought various stationery, together with more than 50,000 ball pens and pencils provided by our member enterprise, and sent to five Huazhong Hope School before the Spring Festival of 2006.

6. Contact Information

➤ SHANGHAI HEADQUATER

- Address: 23F Xinhualian East Building, 755 Huaihai Road Middle, Shanghai Zip Code: 200020
- Tel: +86-21-6467-1198 Fax: +86-21-6467-9155
- Person in Charge: Zhang Xiaoling (Member Service Dept. Manager)
- E-mail Address: shcs@shcs.com.cn
- Homepage Address: <http://www.shcs.com.cn>

➤ BEIJING BRANCH

- Address: Room 1115, Tower A, Xingfu Towers, 3 North Dongsanhuan Road, Beijing, China Zip Code: 100027
- Tel: +86-10-8451-1257,1287 Fax: +86-10-8451-1217
- Person in Charge: Zhao Shu (Japanese Speaker)
- E-mail Address: zhaoshu@shcs.com.cn

➤ GUANGZHOU BRANCH

- Address: Room 1209, Yaozhong Plaza, 9 West Linhe Road, Guangzhou, China Zip Code: 510620
- Tel: +86-20-3801-1800 Fax: +86-20-3801-1810
- Person in Charge: Xu Jin (Dept. Manager, Japanese Speaker)
- E-mail Address: xujin@shcs.com.cn

➤ SUZHOU BRANCH

- Address: Room 1203 Genway Building, 188 Wangdun Road, Suzhou Industrial Park Zip Code: 215028
- Tel: +86-512-6809-4510 Fax: +86-512-6809-9013
- Person in Charge: Li Jinji (Dept. Manager, Japanese Speaker)
- E-mail Address: lijinji@shcs.com.cn

➤ Shanghai Huazhong Information System Consulting Co., Ltd.

- Address: Room C, 23F Xinhualian East Building, 755 Huaihai Road Middle, Shanghai Zip Code: 200020
- Tel: + 86-21-6467-1198 Fax: +86-21-6467-9155
- Person in Charge: Shoichi Kobayashi (General Manager)
- E-mail Address: shis@shcs.com.cn

➤ OSAKA OFFICE (Huazhong Consulting Co., Ltd.)

- Address: 2-2-11 Doshomachi, Chuo-Ku, Osaka, Japan Zip Code: 541-0045
- Tel: +81-6-6232-0775 Fax: +81-6-6232-0776
- Person in Charge: Chen Geng (Manager of Consulting Dept.), E-mail Address: osaka.jhcs@shcs.co.jp

➤ TOKYO OFFICE (Huazhong Consulting Co., Ltd.)

- Address: Room No.1007, THE HUB Nihonbashi Kabutocho, 9-5 Nihonbashi Kabutocho, Chuo-ku, Tokyo, JAPAN Zip Code: 103-0026
- Tel: +81-3-5643-7353 Fax: +81-3-5643-7354
- Person in Charge: Yoichi Takakura (Chief and Consulting Dept. Manager), E-mail Address: takakura@shcs.co.jp

Last but not least...

We are ready to assist you in solving any problems occurring in your investment business in China any time.

Reference

- [Company Profile and Project Achievement List](#)
- [Membership Regulation](#) (including [Application Form for Membership](#) and [Memorandum](#)), [Request Form for Business Operation/Investigation](#)

※For the updated Company Profile and related Application forms for Membership, please contact our Member dept. or refer to our homepage.